

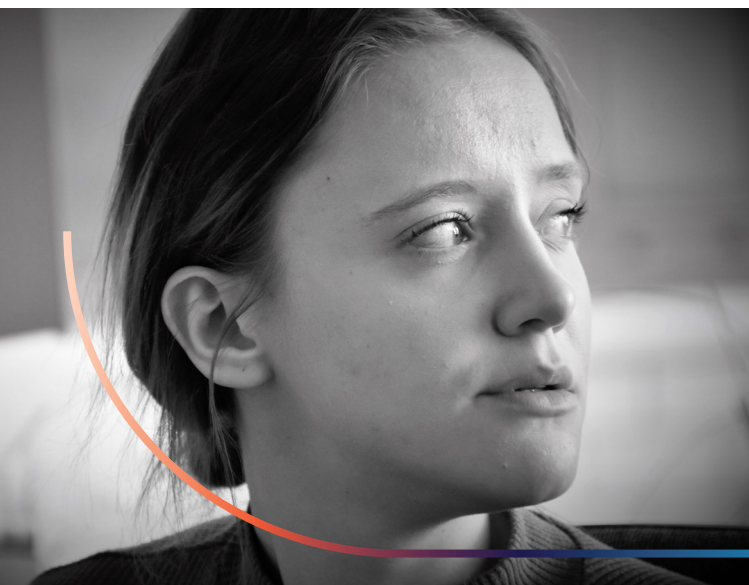


Flexible Support Packages





Quantum holds the responsibility for the distribution, processing and reporting requirements of flexible support package applications across Inner Gippsland.



If you are in immediate danger please call: **000**

Latrobe and Baw Baw Areas

(Inner Gippsland) intake and assessment provided by The Orange Door please call: **1800 319 354**

Wellington intake and assessment service provided by Quantum Support Services please call: **1800 243 455**

Safe Steps 24 hour Family Violence Response please call: **1800 015 188**

1800RESPECT: 1800 737 732

Gippsland Centre Against Sexual Assault: **1800 806 292**

InTouch Multicultural Centre Against Violence: **1800 755 988**

Thorne Harbour Health (family violence services for gender diverse people and the LGBTI community): **1800 134 840**

Quantum believes the celebration of diversity makes us and the community stronger. We are committed to embracing everyone's individual differences so that we can help create a strong workplace and community that is empowered to reach its potential. We celebrate diversity of gender, sexuality and spiritual or religious belief along with all cultural backgrounds including Aboriginal and Torres Strait Islander people. Quantum recognises that we all have diverse life experiences that may be influenced by age, ability, social and financial status. Quantum support everyone's right to feel respected, safe, welcome and valued.

About Flexible Support Packages

Family violence flexible support packages are designed to provide a new individualised approach to respond to victim/survivors experiencing family violence.

Flexible support packages will deliver a personalised and holistic response to victims/survivors experiencing family violence by assisting them to access support, move out of crisis, stabilise and improve their safety, well-being and independence into recovery.

Eligibility for family violence flexible support packages

Packages can only be distributed to victims-survivors from Latrobe, Baw Baw, South Gippsland and Bass Coast Shires who have a case management plan or support plan, that identifies family violence and identifies how these support needs can be assisted through access to an FSP.

Flexible support packages will be targeted to victim/survivors:

Who are escaping

Who have recently experienced family violence

Who are planning to leave an abusive situation or have the perpetrator removed from the home with appropriate legal sanctions in place.

In addition to the risk assessment, a thorough case management/ safety or support plan needs to identify the way in which a flexible support package would support the victim/survivors:

To establish sustainable arrangements that support their long-term health and wellbeing

In preventing intervention by child protection

In leaving their current family arrangements in which family violence is occurring.

What Quantum Support Services Aim to Deliver

Quantum should aim to deliver the following outcomes for victim-survivors in a manner that is flexible enough to meet their varying needs and priorities:

Freedom from abuse and violence

Suitable and stable housing

Good physical and mental health

Participation in learning and education

Participation and contribution to the economy

Financial security and independence

Social engagement

Identification and connection to community

Use of flexible support packages must represent the most cost-effective, timely and appropriate response to meet the outcomes identified in a person's support plan.



Call 1800 243 455 for an assessment and further information.

We care for Gippslanders

For all information regarding our services and locations please don't hesitate to contact us on:

Morwell
227 Princes Drive

Sale
65 Macalister Street

Warragul
36 Williams Street

Bairnsdale
306 Main Street

Call 1800 243 455

quantum.org.au

Email: mail@quantum.org.au



*Quantum Support Services
acknowledges the support of
the Victorian Government*

Proudly partnering with:



VACCA

Connected by culture



Quantum Support
Services is a Child Safe
Organisation



*These are funded programs subject to change.
This information was correct on June 3, 2021*