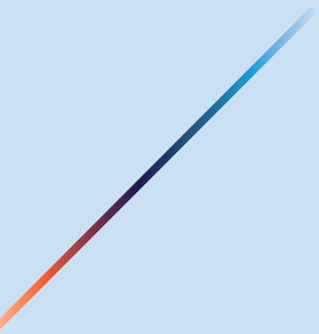



# Adolescent Parent Support





The Adolescent Support Program believe that every child should have the opportunity to reach their fullest potential in a home and community that is safe and promotes their development.



The Adolescent Parent Support Program provides support specifically for adolescents who are parents or soon-to-be parents.



## **Who is this program for?**

The Adolescent Parent Support Program is a specialist service for adolescent parents or soon-to-be parents aged up to 24 years, experiencing significant personal, social and financial issues.

## **What can I expect?**

The aims of this services are to enable clients to identify their own needs and the needs of their child.

It recognises adolescent specific issues, stages of development, attachment and significant personal, social and financial issues.

## **What can Quantum do for me?**

---

Balance the issues of becoming parents

---

Develop parenting skills

---

Improve confidence

---

Develop abilities to meet the developmental needs of your child or children

---

Coordinate with other support services also helping the family, ie schools, doctors, disability services, childcare etc

---

Can provide counselling for families where appropriate

---

# What is Integrated Family Services?

Integrated Family Services (IFS) is a partnership of agencies in the Latrobe and Baw Baw local government areas.

IFS aims to work with families to improve safety, wellbeing and development of children and where possible prevent the involvement of Child Protection.

**IFS provides a range of services dependant on families needs:**

---

Case management

---

In home parenting support

---

Parenting difficulties affecting children's development

---

Coordination with other support services who are also helping with the family, ie Schools, Doctors, Disability Services, Childcare etc

---

Can provide counselling for families where appropriate

Services provided by Child FIRST and IFS are voluntary and dependent upon the parent and child willing to receive the service.

**Call 1800 243 255 for an assessment and further information on program dates and locations**

# We care for Gippslanders

*For all information regarding our services and locations please don't hesitate to contact us on:*

## **Morwell**

227 Princes Drive

## **Sale**

65 Macalister Street

## **Warragul**

36 Williams Street

## **Bairnsdale**

306 Main Street

**Call 1800 243 455**

**[quantum.org.au](http://quantum.org.au)**

Email: [youth.intake@quantum.org.au](mailto:youth.intake@quantum.org.au)



*Quantum Support Services  
acknowledges the support of  
the Victorian Government*

Quantum Support  
Services is a Child  
Safe Organisation

